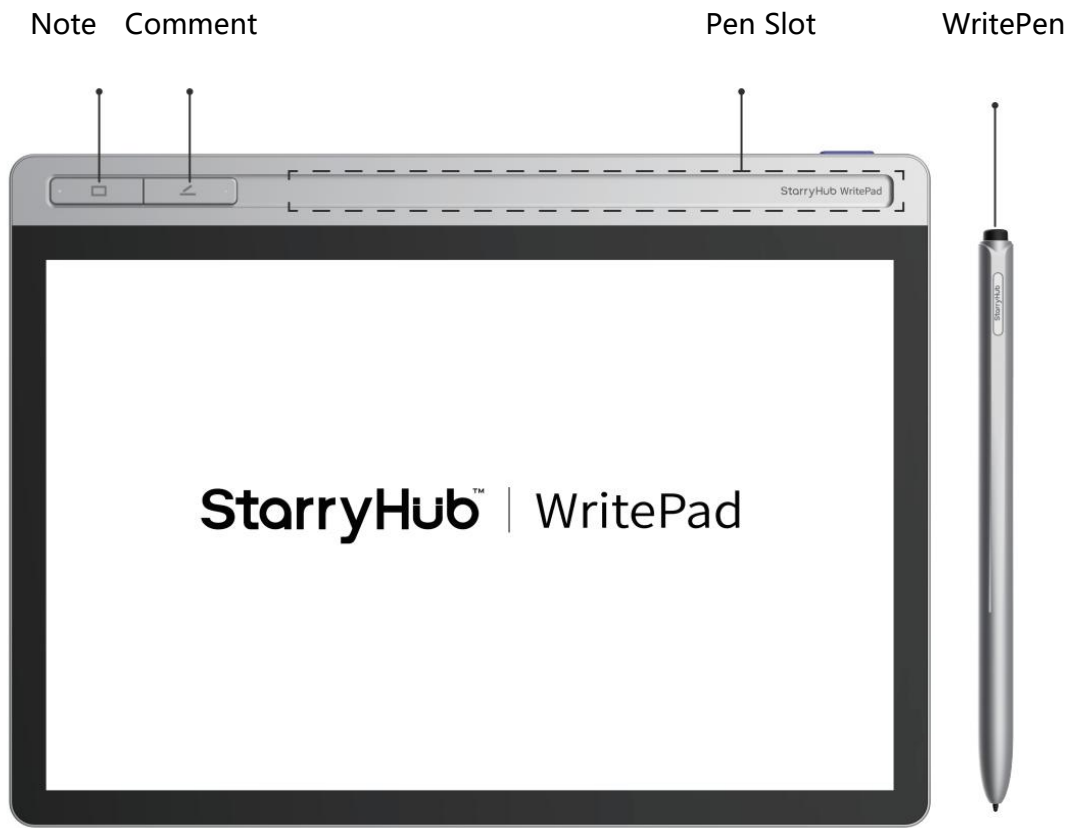




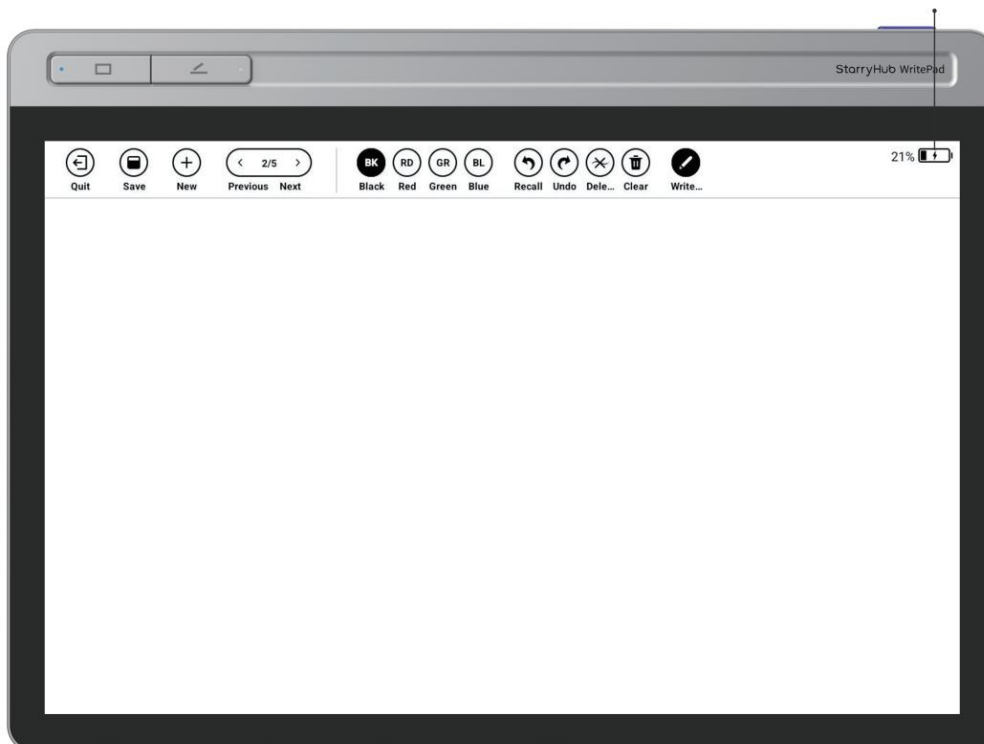
## **StarryHub™** | WritePad

Thank you for choosing WritePad. Since this is a new type in this product category, please go over this Guide in order to get familiar with the WritePad quickly.

# WritePad Diagram

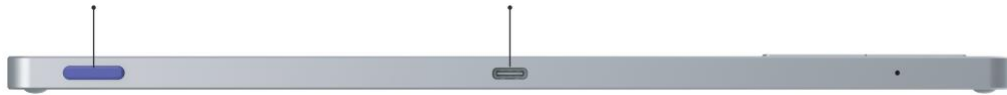


Battery Indicator



Power Switch

Charging Port Type-C



## 1、 Turn on/off

- **Turn on**

Press the power switch for 2 seconds to turn on the WritePad.

- **Turn off**

When the WritePad is on, press the power switch for 2 seconds. A window will pop up from the WritePad screen, tab "Power off" to turn off the WritePad.

- **Standby**

When WritePad is on, short press the power switch or put the WritePen back to the pen slot to enter standby mode.

- **Three methods to wake up WritePad when it' son Standby mode.**

Short press the power switch.

Pick the WritePen from the pen slot.

Short press Note or Comment button.

## 2、 How to use

WritePad is based on Android OS.

WritePad is not a stand-alone product. It needs to be used with StarryHub.

WritePad features are including wireless connection, multi-screen syncing, OTA, adding notes or comments... It can also be applied as a mouse and a trackpad.

### ● Pairing

① Press Note and Comment buttons together for 3 seconds to initiate pairing with StarryHub.



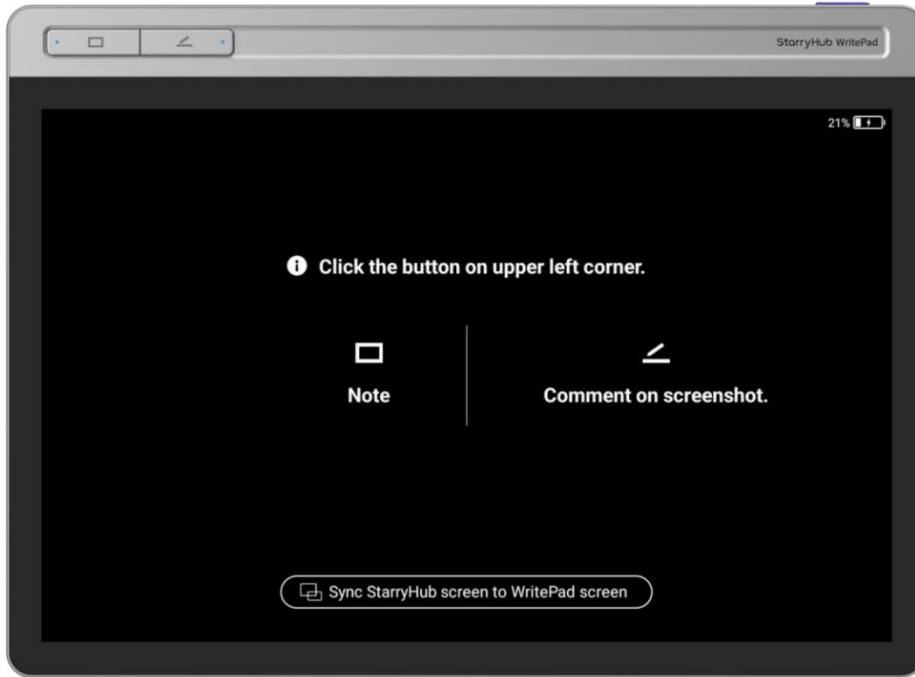
② Enter WritePad app from StarryHub home page using the TouchBoard.

Click "Go to Settings" on the upper right corner of the StarryHub screen.




③ Click “Add WritePad” on the upper right corner and select corresponding WritePad to start pairing. WritePad and StarryHub will be paired 10 seconds after the selection.

Note: If there’ s a WritePad already paired with the StarryHub, please unpair it before pairing your WritePad.



- **Mouse mode**

Use the WritePen to click  to enter mouse mode.

The screen of the StarryHub will be synchronized to the WritePad screen.

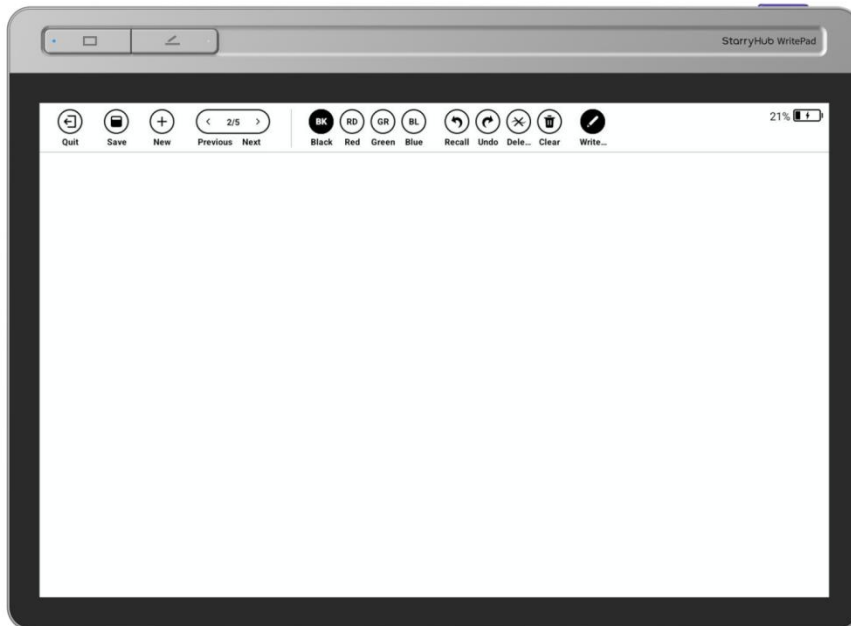


\*This function might not be applicable to some of the StarryHub models. Please refer to the CZUR website or contact CZUR team for more information.

- **Note**

Press the Note button. The indicator of the Note button will light up. The WritePad will open the Note app on StarryHub automatically.

The written trace will be sync to StarryHub screen when content is being written.



② The tail of the WritePen can act as an eraser to erase content or trace on the WritePad screen and StarryHub screen.



③ Use the WritePen to click Quit to quit Note function. StarryHub will return to previous page automatically.

- **Comment**

① Press the Comment button. The indicator of the Comment button will light up.

The current StarryHub screen will be taken as a screen shot and sync to the WritePad. If user starts to write on the WritePad, the trace will be sync to StarryHub screen.



② Use the WritePen to click Quit to quit Comment function and get back previous StarryHub page.



### 3、 Charging

Please do not use power supply that is not within the voltage range of  $5V \pm 5\%$  to charge the WritePad in order to avoid failure.

### 4、 Change of pen tip

A worn pen tip will affect the written experience. Please change the pen tip with the spare tips in the package when necessary.



### 5、 Upgrade

Follow the notification on WritePad settings of StarryHub to upgrade when new release is available.

### 6、 Reminder

- Do not use detergent to clean the equipment to avoid corrosion.
- Keep the StarryHub and its accessories out of the reach of children.
- Please make sure to use the StarryHub in a dry and ventilated environment.
- Do not store the StarryHub and its accessories under extreme temperature because extreme temperature will shorten the life of electronic parts.
- Do not put the StarryHub or its accessories into any drying machines or heating devices.

## **7. After-sale Service And Warranty**

Thank you for choosing StarryHub and supporting CZUR.

Please go over below so you can understand how after-sales service works and what the warranty terms are.

1. All warranty terms and after-sales service are following the local laws and regulations in the territories of the CZUR authorized sellers.

If there' s no specified laws or regulations in this territory, standard warranty is 12-month from the date of purchase for all hardware, excluding nature expiration, artificial damage, unusual breaks and terms listed below in non-warranty coverage.

2. Non-warranty coverage:

- 1) Standard working environment temperature should be within the range of 0~40 degrees Celsius,
- 2) Failure or damage caused by incorrect installation or use in non-specified working conditions (such as excessive temperature, excessive humidity, etc.),
- 3) Damage caused by non-official parts or parts replaced by users without instruction or confirmation from CZUR support team,
- 4) Damage caused by disasters, accidents or human factors,
- 5) Failure or damage caused by unauthorized disassembly, repair, modification, or abuse,
- 6) Damage caused by repairs performed by any unofficial authorized repair center.

## **8、 Contact information**

**Reach CZUR team via one of the following ways for support or share your comments.**

Company Name: CZUR TECH CO., LIMITED

Website: [www.czur.com](http://www.czur.com)

Sales Office: RM722, Block B, Podium of Building No. 12, Shenzhen Bay

Eco-Technology Park, No. 10 Gaoxin South RD., Nanshan District, Shenzhen,  
518063, China.

Office line: 0086-755-23974826

E-mail address: support@czur.com

Software Center: Room1001,10th Floor, Block A, No.32A Huoju Road, High-tech  
Industrial Zone, Dalian City, Liaoning Province, China

Factory Address: 6th Floor, Building E, Huihong Industrial Park, No. 170

Jinxiaotanghuancun Road, Fenggang Town, Dongguang city, Guangdong province,  
523690, China.

## **FCC STATEMENT**

This device complies with part 15 of the FCC Rules. Operation is subject to the following two conditions: (1) This device may not cause harmful interference, and (2) this device must accept any interference received, including interference that may cause undesired operation.

Any Changes or modifications not expressly approved by the party responsible for compliance could void the user's authority to operate the equipment.

Note: This equipment has been tested and found to comply with the limits for a Class B digital device, pursuant to part 15 of the FCC Rules. These limits are designed to provide reasonable protection against harmful interference in a residential installation. This equipment generates uses and can radiate radio frequency energy and, if not installed and used in accordance with the instructions, may cause harmful interference to radio communications. However, there is no guarantee that interference will not occur in a particular installation. If this equipment does cause harmful interference to radio or television reception, which can be determined by turning the equipment off and on, the user is encouraged to try to correct the interference by one or more of the following measures:

- Reorient or relocate the receiving antenna.
- Increase the separation between the equipment and receiver.
- Connect the equipment into an outlet on a circuit different from that to which the receiver is connected. -Consult the dealer or an experienced radio/TV technician for help.

\*RF warning for Portable device:

The device has been evaluated to meet general RF exposure requirement. The device can be used in portable exposure condition without restriction.

## **FCC Caution**

This device complies with part 15 of the FCC Rules. Operation is subject to the following two conditions: (1) This device may not cause harmful interference, and (2) this device must accept any interference received, including interference that may cause undesired operation.

Any Changes or modifications not expressly approved by the party responsible for compliance could void the user's authority to operate the equipment.

**Note:** This equipment has been tested and found to comply with the limits for a Class B digital device, pursuant to part 15 of the FCC Rules. These limits are designed to provide reasonable protection against harmful interference in a residential installation. This equipment generates uses and can radiate radio frequency energy and, if not installed and used in accordance with the instructions, may cause harmful interference to radio communications. However, there is no guarantee that interference will not occur in a particular installation. If this equipment does cause harmful interference to radio or television reception, which can be determined by turning the equipment off and on, the user is encouraged to try to correct the interference by one or more of the following measures:

- Reorient or relocate the receiving antenna.
- Increase the separation between the equipment and receiver.
- Connect the equipment into an outlet on a circuit different from that to which the receiver is connected.
- Consult the dealer or an experienced radio/TV technician for help.

Specific Absorption Rate (SAR) information:

This device meets the government's requirements for exposure to radio waves. The guidelines are based on standards that were developed by independent scientific organizations through periodic and thorough evaluation of scientific studies. The standards include a substantial safety margin designed to assure the safety of all persons regardless of age or health. FCC RF Exposure Information and Statement the SAR limit of USA (FCC) is 1.6 W/kg averaged over one gram of tissue. Device types: WritePad(FCC ID: 2AYK3-WRITEPAD) has also been tested against this SAR limit. This device was tested for typical body-worn operations with the back of the device kept 10mm from the body. To maintain compliance with FCC RF exposure requirements, use accessories that maintain a 10mm separation distance between the user's body and the back of the WritePad . The use of belt clips, holsters and similar accessories should not contain metallic components in its assembly. The use of accessories that do not satisfy these requirements may not comply with FCC RF exposure requirements, and should be avoided.

**About this Quick Guide (hereinafter referred to as the "guide")**

Thank you for purchasing the product of CZUR Tech Co., Limited. (hereinafter referred to as "CZUR")

For your safety and interests, please read the guide carefully before use.

CZUR will not be responsible for any loss or damage caused by your failure to operate according to the guide.

The copyright of the guide belongs to CZUR.

If the content of the guide is inconsistent with the actual product, the actual product shall prevail. If you have any objection to the content or terms of the guide, please submit a written objection to CZUR within seven days after purchase, otherwise it will be deemed that you have agreed to understand the entire content of the guide.

CZUR reserves the right to interpret and modify the instructions without prior notice.